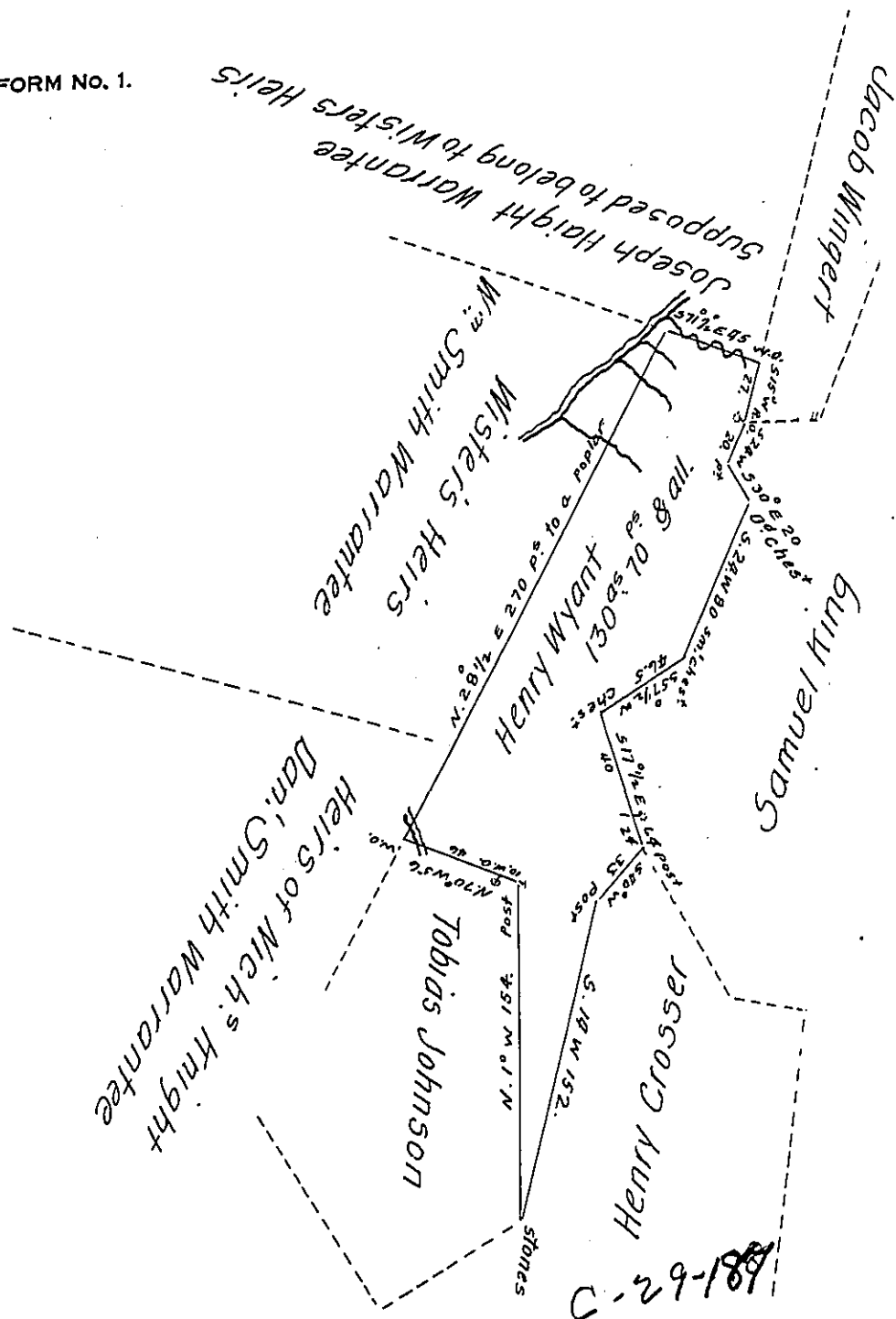


FORM No. 1.



Situate in Milford Township, Somerset County, & Surveyed the 27th day of April 1827. In pursuance of a Warrant dated the 14th day of April A.D. 1827.

To Gabriel Hiester Esq. } P^r. Bernard Connelly J^r D.S. Som^t Co
 Surv^r. Gen! }

N.B. The above described tract, was first improved on or about the 1st of Aug^t 1806; at which time an Actual personal Resident Settlement was Commenced thereon which has been continued without intermission & the Same occupied as a farm up to the present time, as appears by the testimony of credible Witnesses.

B.C. J^r

IN TESTIMONY that the above is a copy of the original remaining on file in the Department of Internal Affairs of Pennsylvania, made conformably to an Act of Assembly approved the 16th day of February 1833, I have hereunto set my hand and caused the Seal of said Department to be affixed at Harrisburg, this twenty seventh day of June 1907.

Henry Houch

Secretary of Internal Affairs.